

小島 **BIRD FREE**



Protecting the
urban environment

INSTALLATION MANUAL



Surfaces MUST be thoroughly cleaned and sanitised before *Bird Free*® dishes are applied. Read all cleaning and spacing instructions below before use.

Directions for use

Bird Free® may be used to deter feral pigeons from roosting or nesting on buildings and other structures. *Bird Free*® is supplied in ready-to-use plastic dishes (65mm diameter; 8mm high). These should be affixed to dry, cleaned surfaces with silicone adhesive (e.g. Avisil/Silirub). Remove covers from dishes. Magnetic dishes and cable tie bases are also available.

ALWAYS FOLLOW THE STEPS BELOW

1. Apply **DISINFECTANT** to surfaces and allow to soak for 20 minutes
2. Clean thoroughly, removing droppings and all other organic matter
3. **RINSE** surfaces
4. Re-spray surfaces lightly with disinfectant
5. Allow surfaces to dry
6. Install dishes with **LIDS REMOVED, FOLLOWING SPACING GUIDELINES OVERLEAF.**

CLEANING SURFACES: PRECAUTIONARY STATEMENTS

It is essential to clean the application site of all nests, faeces and other organic debris before *Bird Free*® is applied. (Failure to do so will compromise.)

Routine cleaning of droppings from day roosts, where there are no nests or major accumulation of faeces, can be done with scrapers and wire brushes. Simple precautions to reduce direct contact with droppings, such as wearing disposable gloves and disposable overalls should be taken.

When cleaning long-standing nests or night roosts, where there is a major accumulation of faeces, full PPE, including masks, should be worn. Precautions should be taken to ensure that members of the public are not exposed to airborne dust or other debris. Surfaces should be wetted with biocide or water mixed with detergent where faeces are present to limit generation of airborne dust and aerosol mists during cleaning.

If a pressure washer is used, dust and aerosol control measures, such as containing the area with plastic sheeting, should be taken. Alternatively the wetted faeces and debris can be removed with a shovel. The wet material should be collected in heavy-duty plastic bags, or some other type of secure container, and suitable arrangements made for disposal.

Wash skin and clothing after cleaning bird debris and before eating or drinking. Do not touch or rub eyes while or after handling *Bird Free*®. When cleaning large amounts of bird debris, operatives should be informed of the possible health risks involved. Persons with compromised immune systems should avoid the cleaning operation.

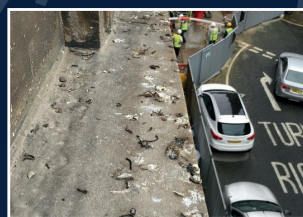
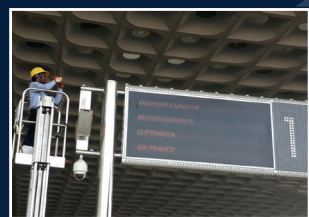
Understanding birds' behaviour and being able to identify their habits is key to controlling pigeons in the urban environment. The site from which the pigeons are to be excluded must first be assessed to determine if it is a day roost, a night roost, or a nesting site. Dishes of *Bird Free*® will need to be fixed to the surfaces occupied by the pigeons at 25, 20 or 15cm centres, depending on the nature of the habitat.

ALWAYS SPACE DISHES AS SHOWN BELOW

Low pressure/day roosts: 25cm (centre to centre)

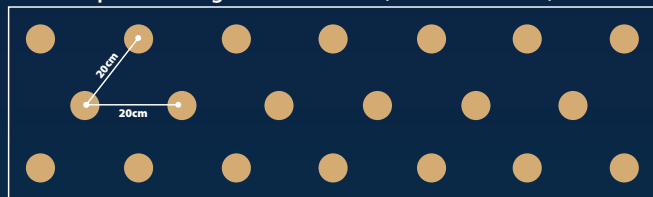


Fix dishes 2cm behind leading edge



Many day roosts are vantage points from which pigeons scout for food. When applying *Bird Free*® to a ledge dishes should be fitted 2cm behind the leading edge. The dishes will then be invisible from below. When applying *Bird Free*® to window ledges with raised cills extra dishes should be fitted into the corners (bottom right).

Medium pressure/night roosts: 20cm (centre to centre)



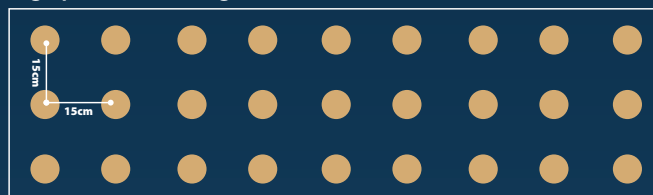
Many bird control jobs will involve sites with long-standing nests/night roosts. (Unsuccessful attempts to exclude the birds will often be evident at such sites.) Correct installation of *Bird Free*® to their nests/night roosts will cause pigeons to abandon the whole site, provided there is no food source available to them. (Further treatment will be required where food sources are present.)

Wherever nests/night roosts are present, treatment is as follows:

- 1) Remove all nests and droppings
- 2) Disinfect the surfaces
- 3) Fix dishes of *Bird Free*® to nesting sites at 15cm; night roosts at 20cm centres.

Call 07956 559519 for further help and advice.

High pressure/nesting sites: 15cm (centre to centre)



Nests are invariably to be found in enclosed spaces which offer shelter and safety from predators. Some nests (below left) are easy to spot. The nest was removed, the surface disinfected, and four dishes of *Bird Free*® were fixed in a square at 15cm centres. Many nests, however, are concealed in enclosed spaces and are not immediately apparent. The nesting site shown below right was found against a wall behind an air conditioning duct. The nest was removed, disinfected and treated as shown.

小島 **BIRD FREE**



Protecting the
urban environment

For technical support or other questions, contact:

Bird Free Ltd
+44 207 359 9988
+44 7956 559519
ian.smith@bird-free.com